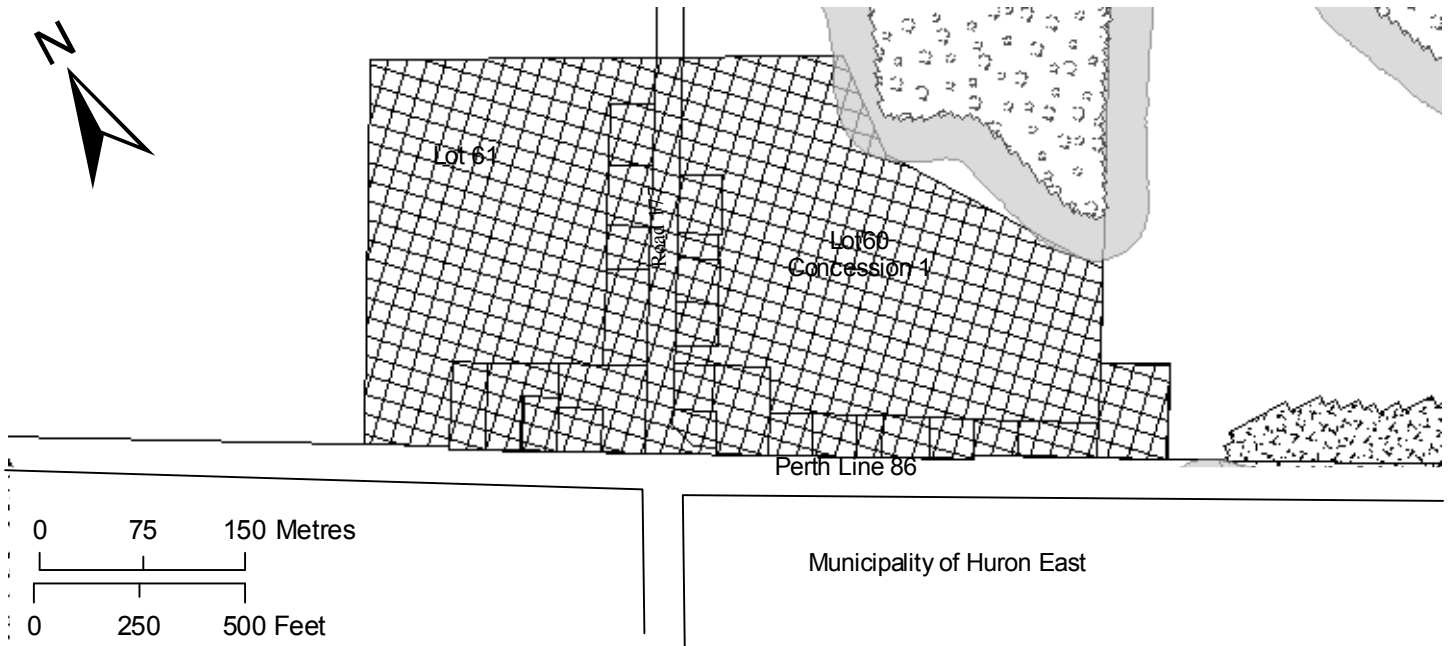


# Schedule 'A2-2'

Amended By OPA: 6  
47

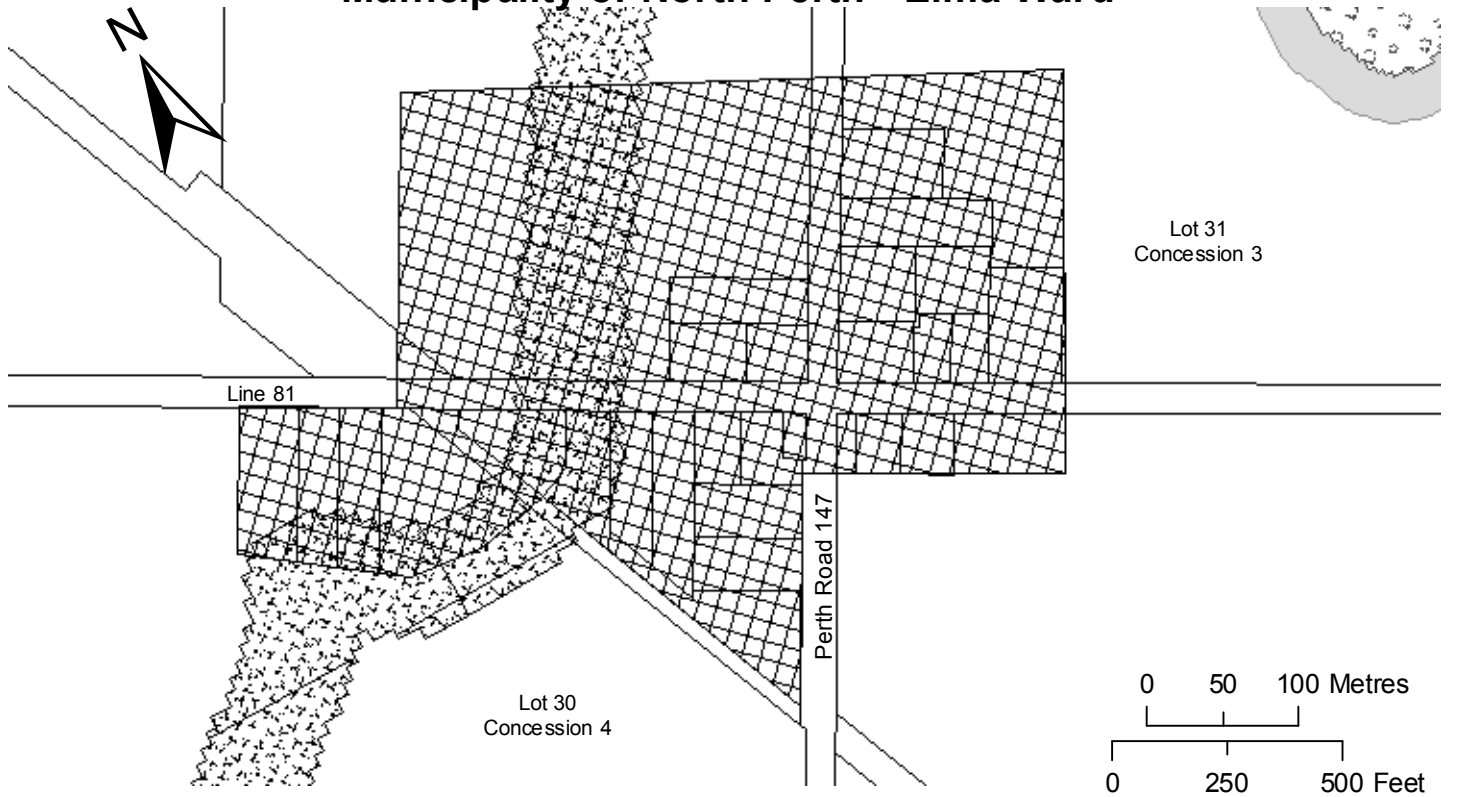
## Molesworth Municipality of North Perth - Wallace Ward



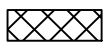




# Schedule 'A2-3'

Amended By OPA: 47

## Britton Municipality of North Perth - Elma Ward



### Legend

- |   |                                 |   |                                 |
|---|---------------------------------|---|---------------------------------|
|  | Hamlet                          |  | Natural Resources / Environment |
|  | Agriculture                     |  | Adjacent Land                   |
|  | NRE Adjacent Land / Buffer Area |   |                                 |



April 2008